



Columbia River Basin Salmon

Multi Species Index of United States [Canada not included in this map]

This map displays the index scores for the Columbia Basin for multiple species of salmon according to experts in Oregon, Washington, Idaho and California. The ratings are a combination of percent natural origin spawners, productivity and abundance, and life history diversity within a population. The higher the number, the better the combined rating.

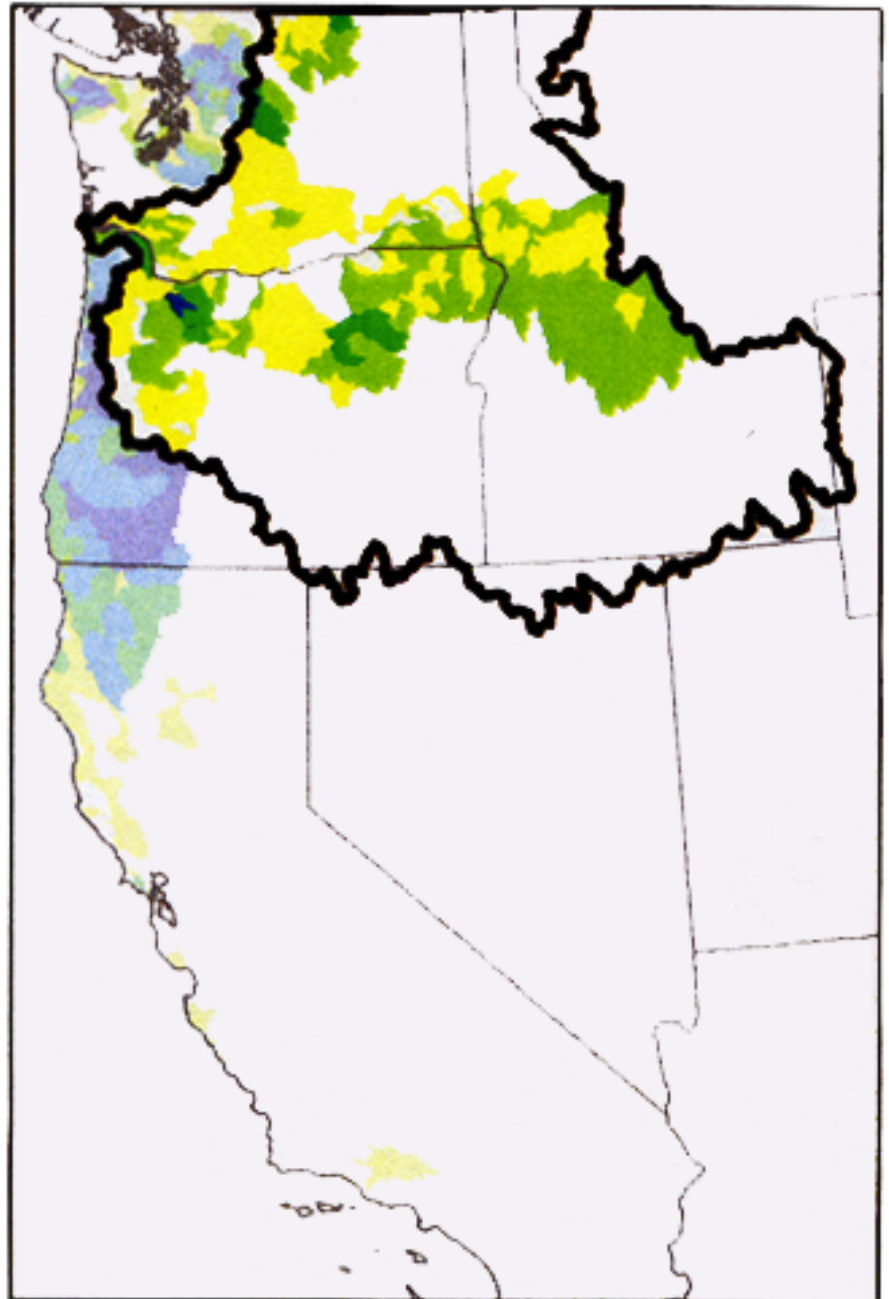
Legend

-  Columbia River Basin
-  Political Boundries

Multi Species

Index

	4	-	14
	15	-	26
	27	-	39
	40	-	52
	53	-	67



Map created for No Water No Life
by Sasha Twelker of the Wild Salmon Center, July 2007
stwelker@innovativeenvironmentalnw.com
www.wildsalmoncenter.org